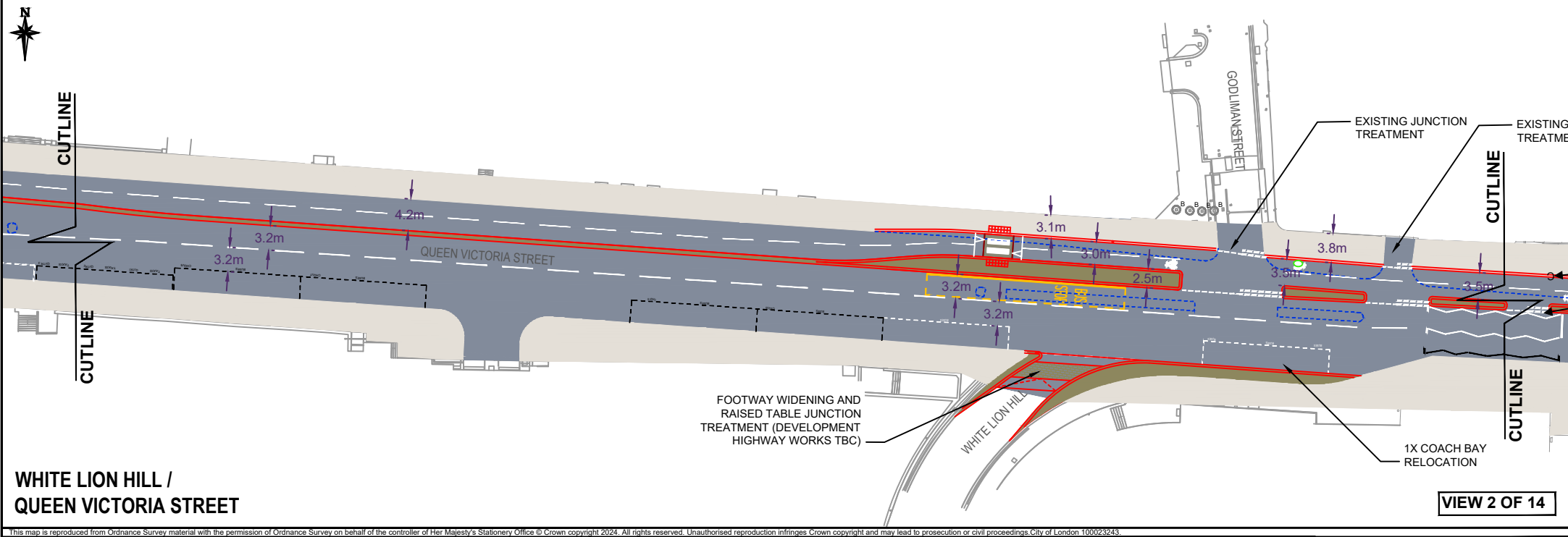
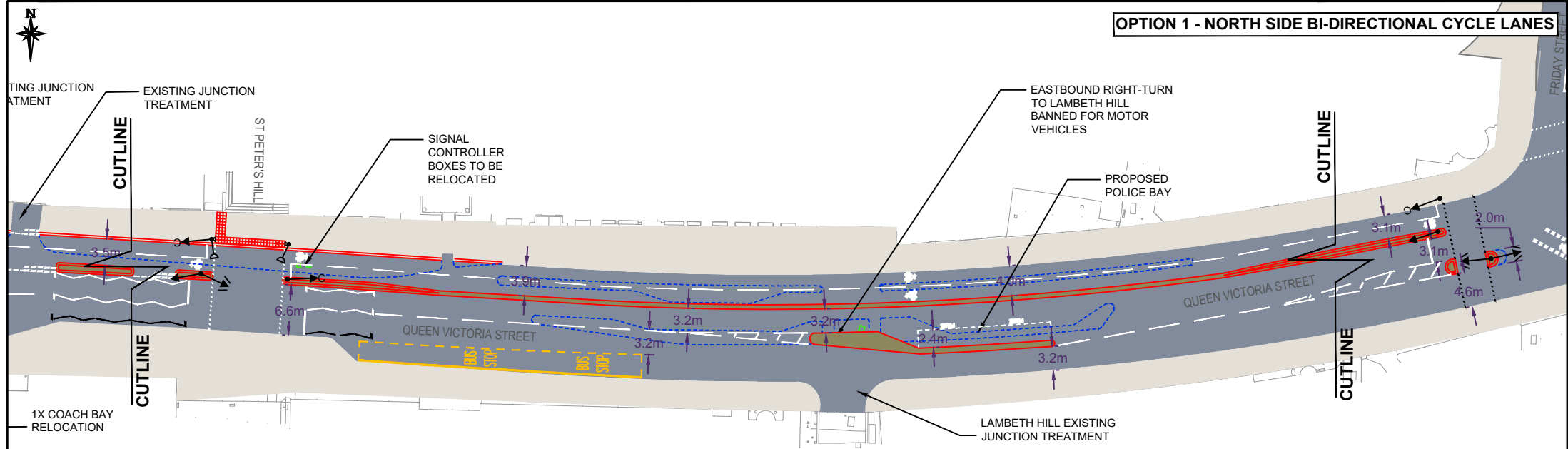


**NEW BRIDGE ST / QUEEN VICTORIA STREET
PUDDLE DOCK / QUEEN VICTORIA STREET**

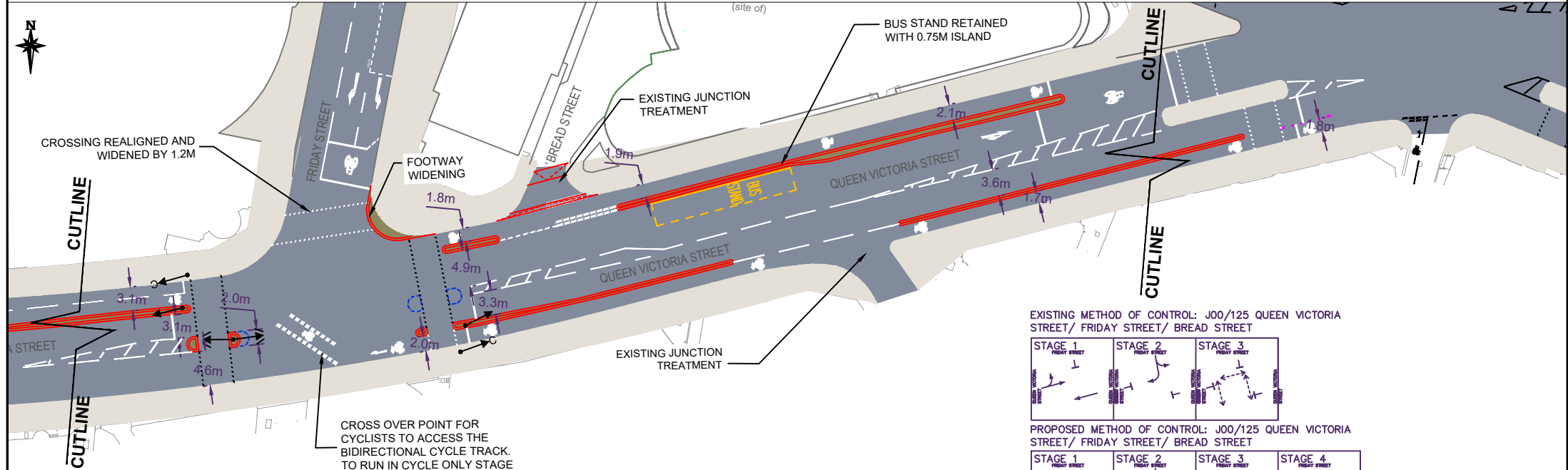


**WHITE LION HILL /
QUEEN VICTORIA STREET**

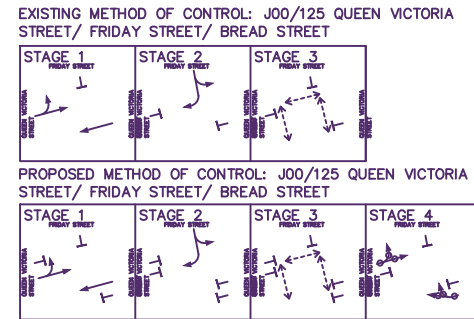
This map is reproduced from Ordnance Survey material with the permission of Ordnance Survey on behalf of the controller of Her Majesty's Stationery Office © Crown copyright 2024. All rights reserved. Unauthorised reproduction infringes Crown copyright and may lead to prosecution or civil proceedings. City of London 100023243.



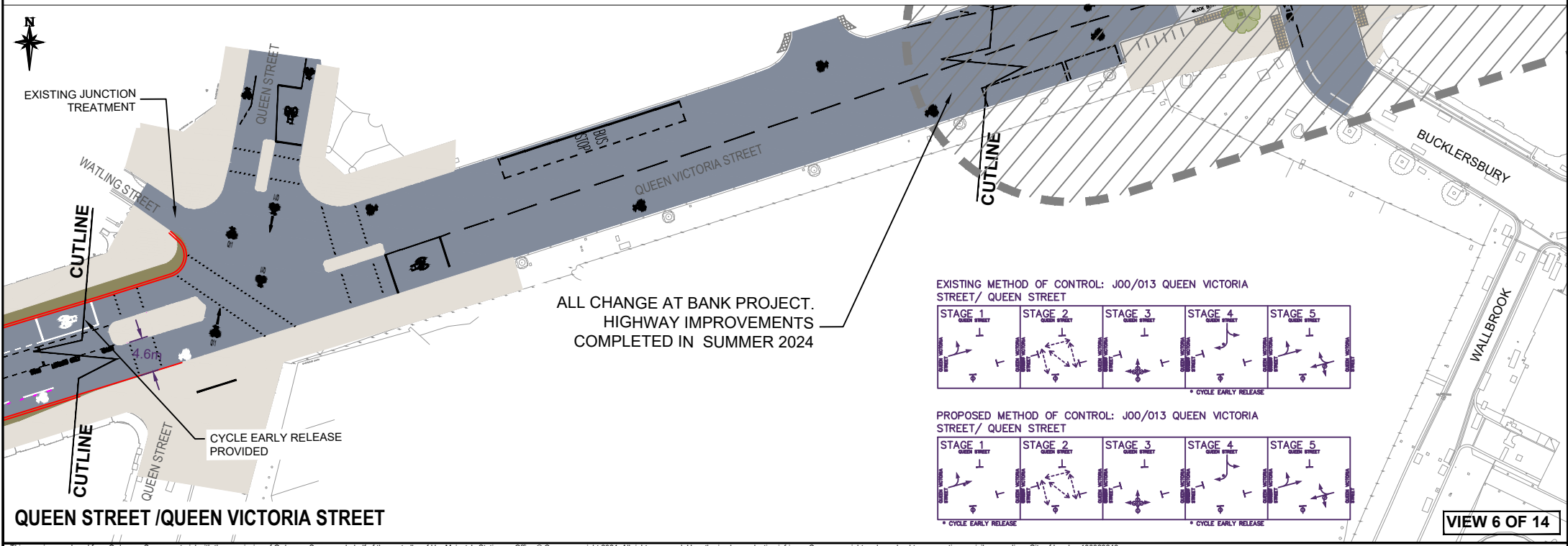
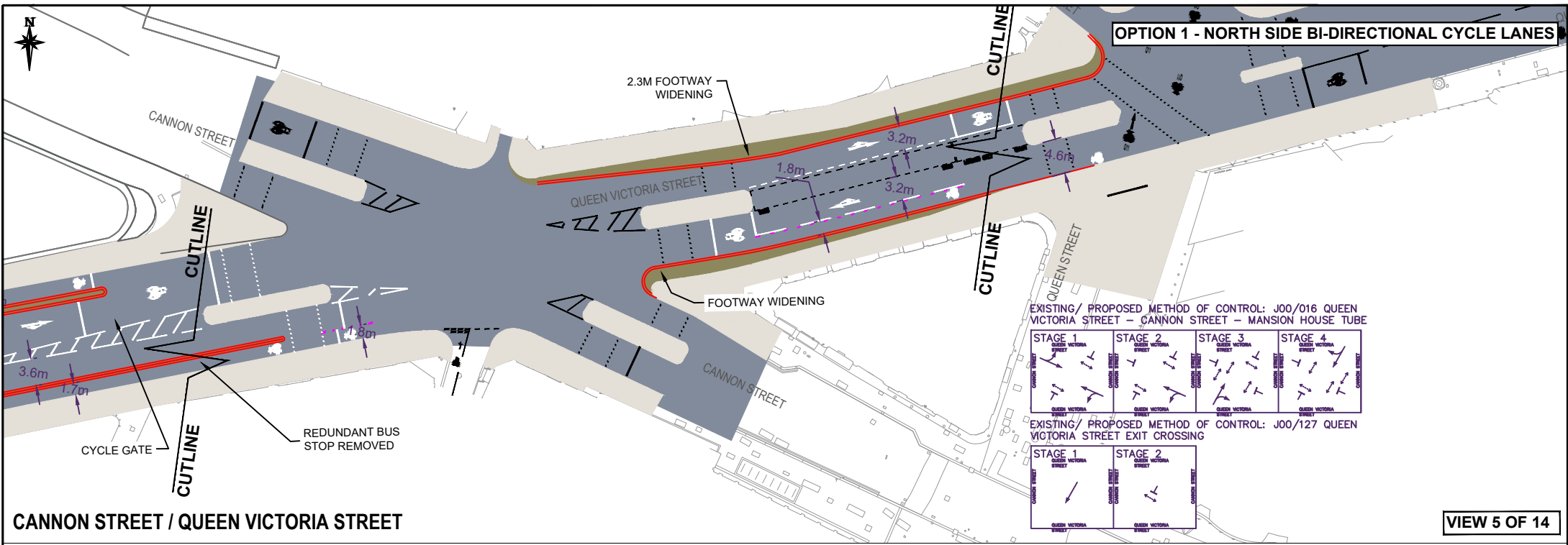
ST PETER'S HILL /
QUEEN VICTORIA STREET

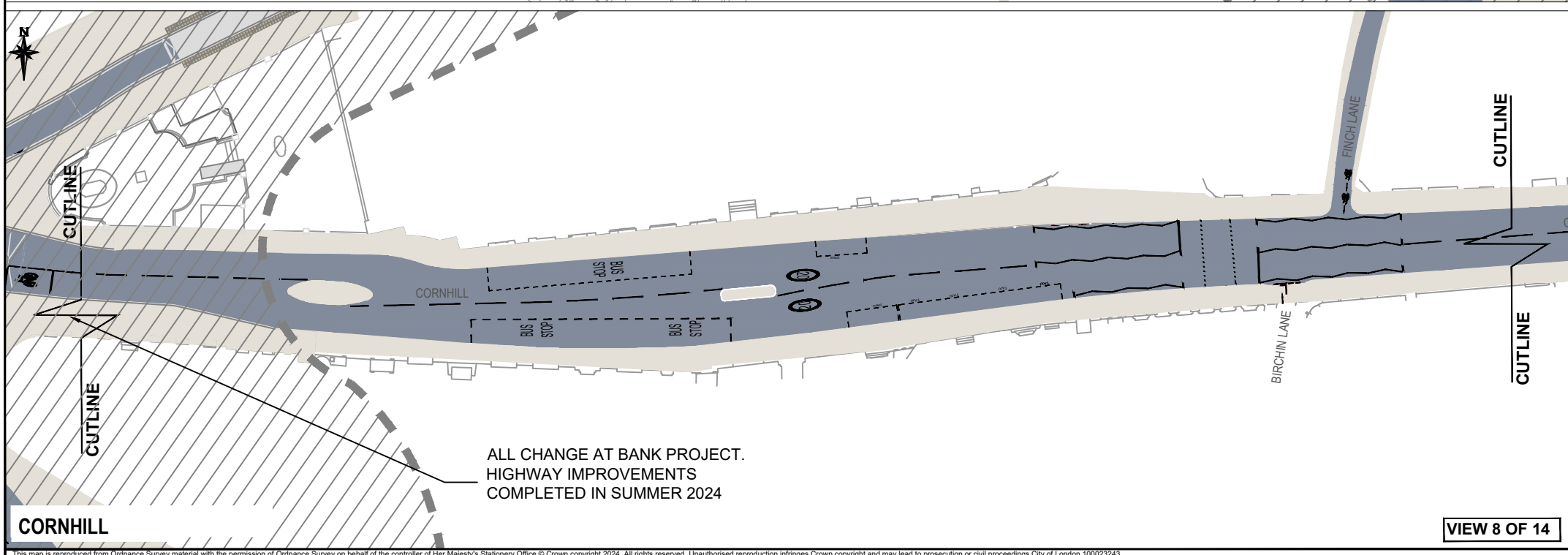
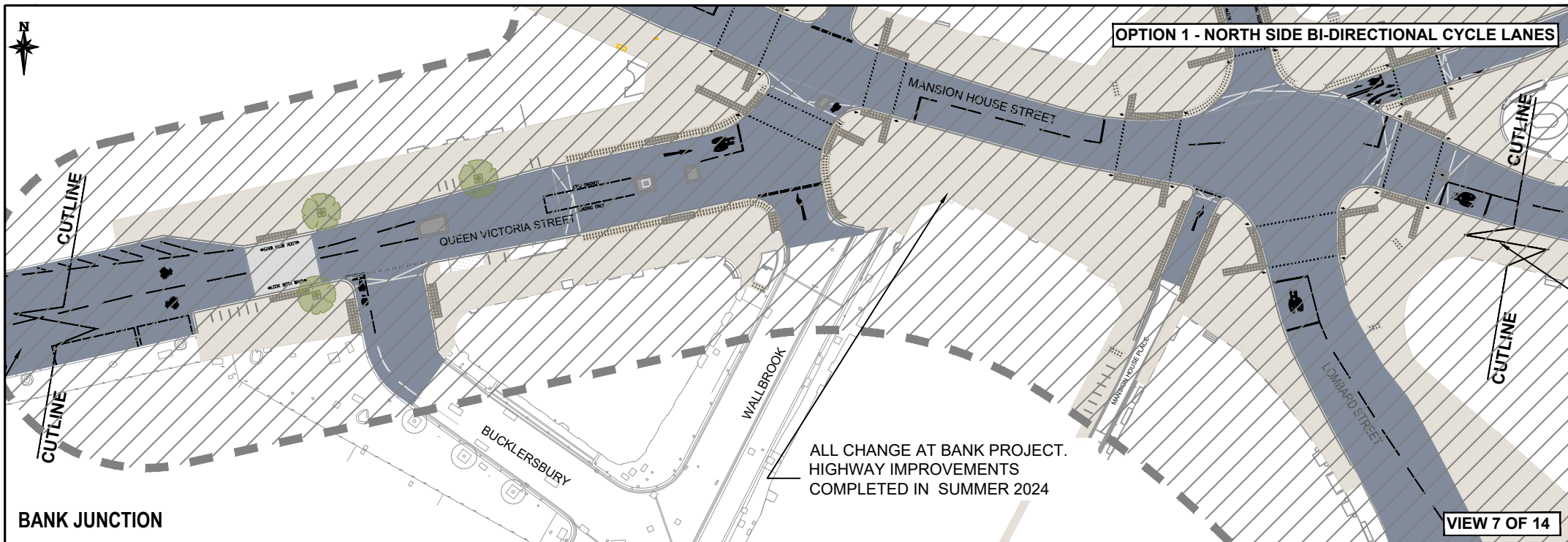


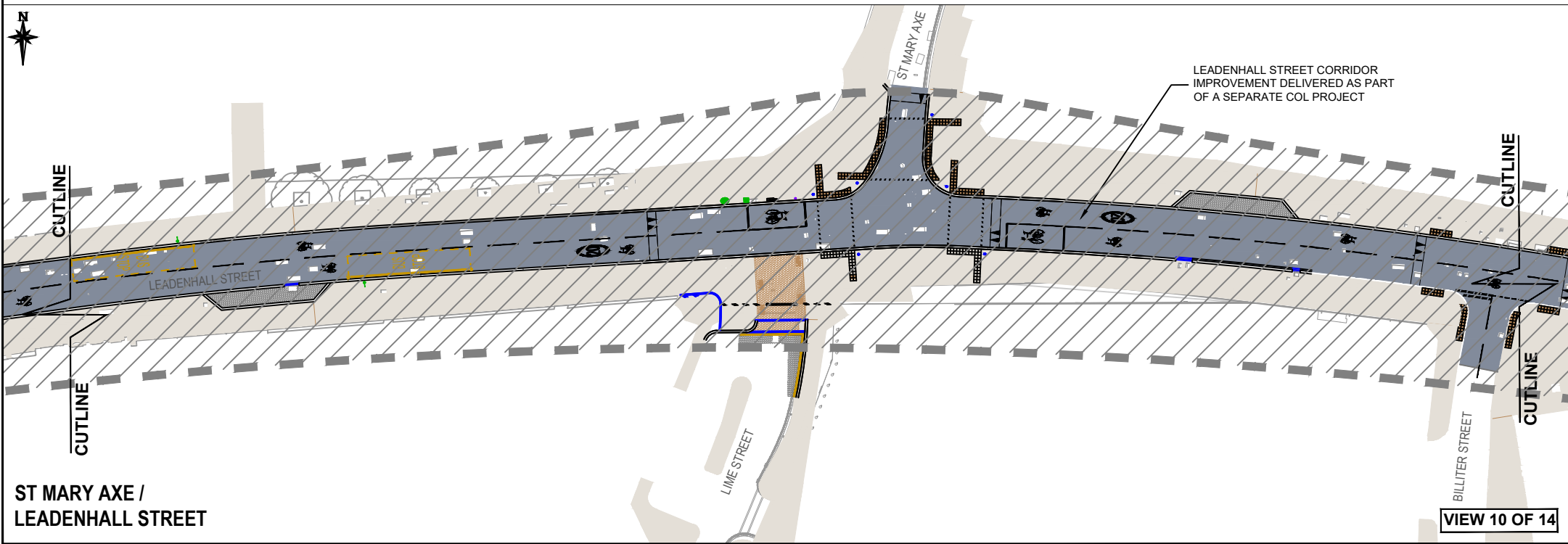
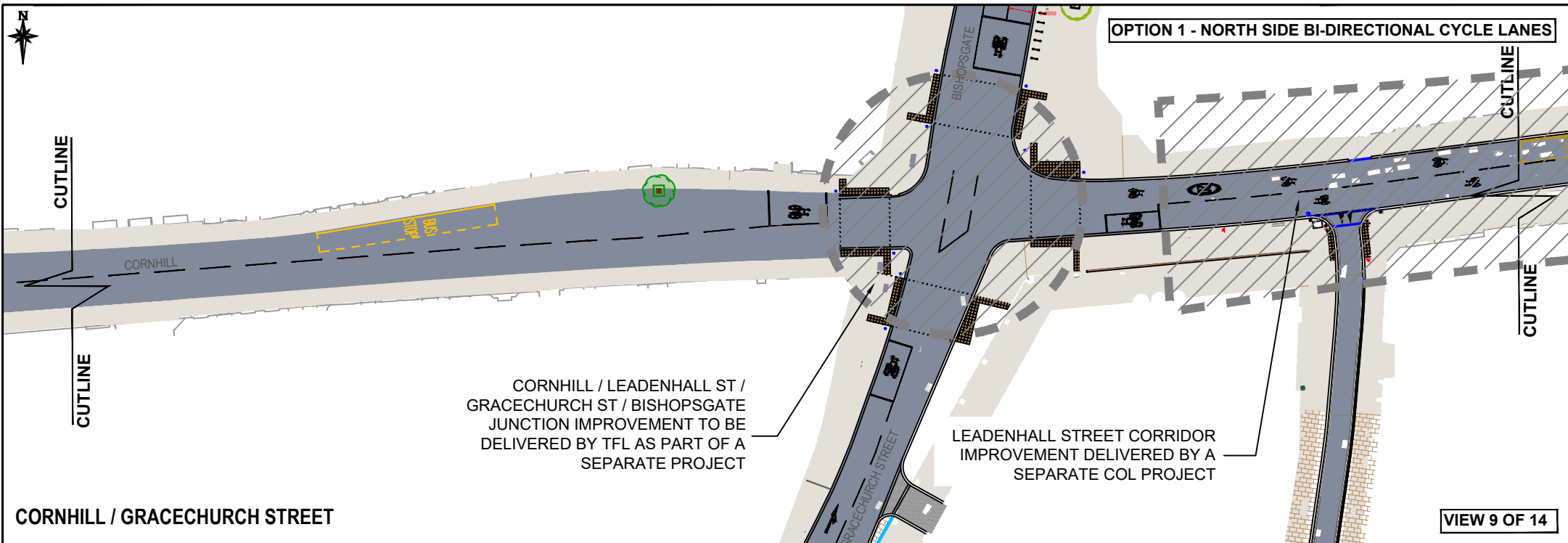
FRIDAY STREET /
QUEEN VICTORIA STREET

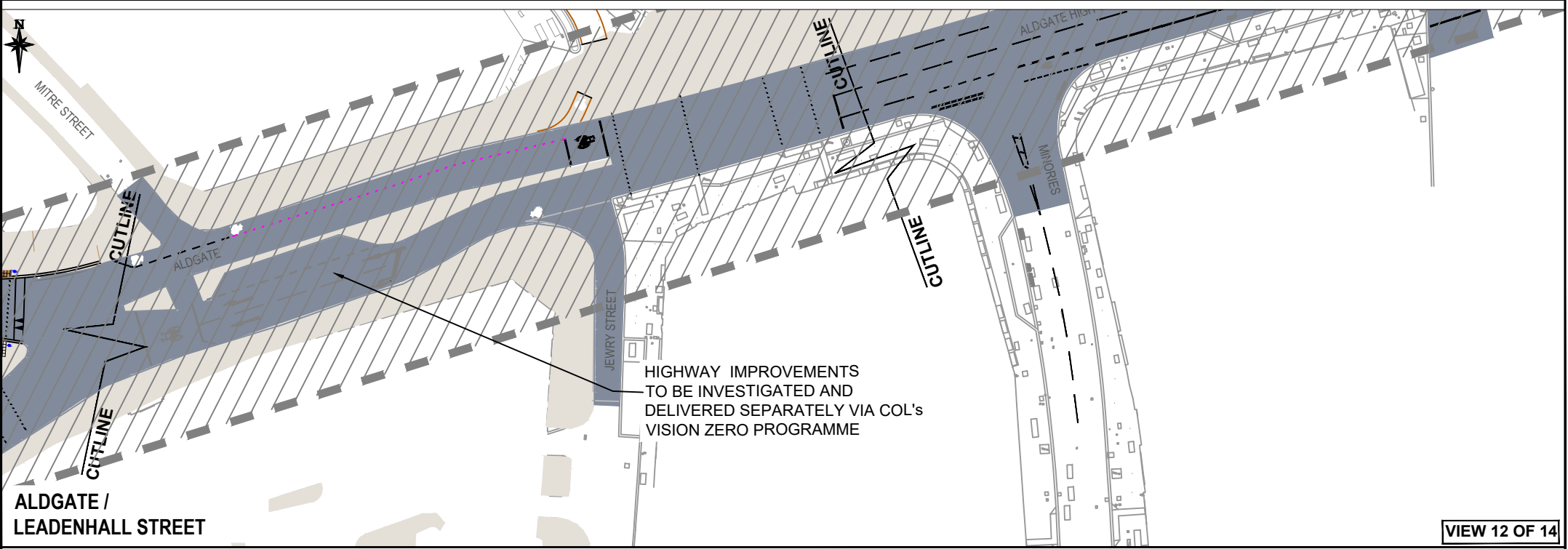
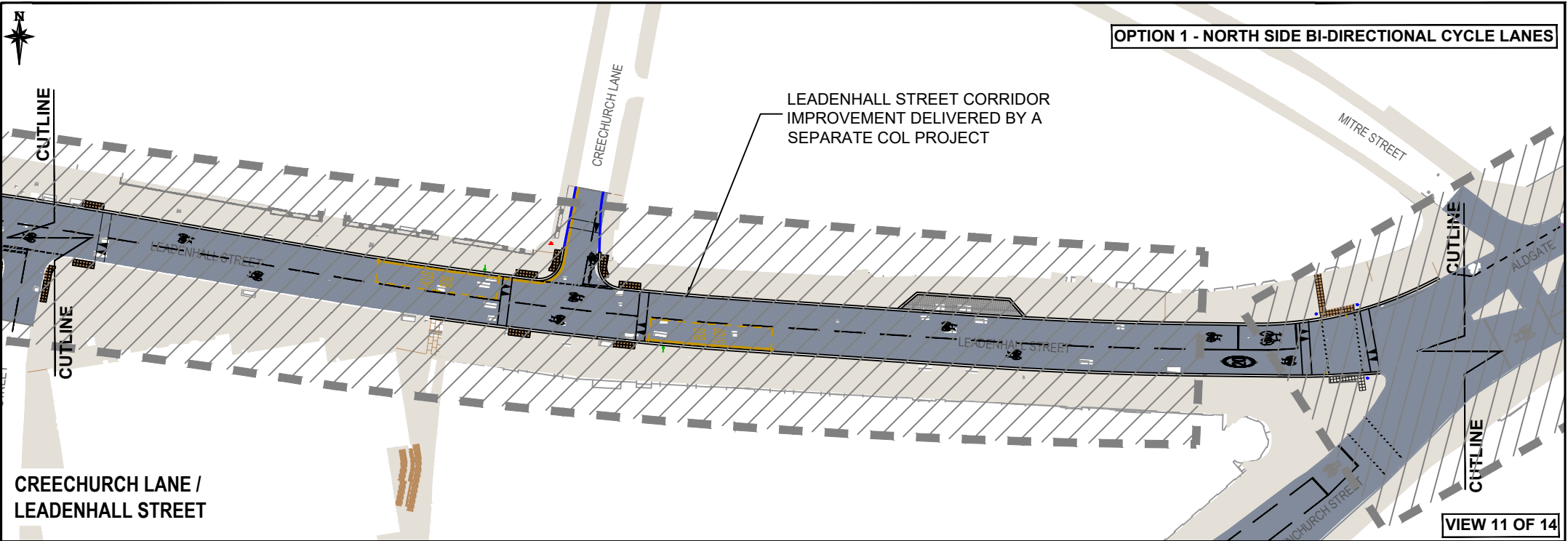


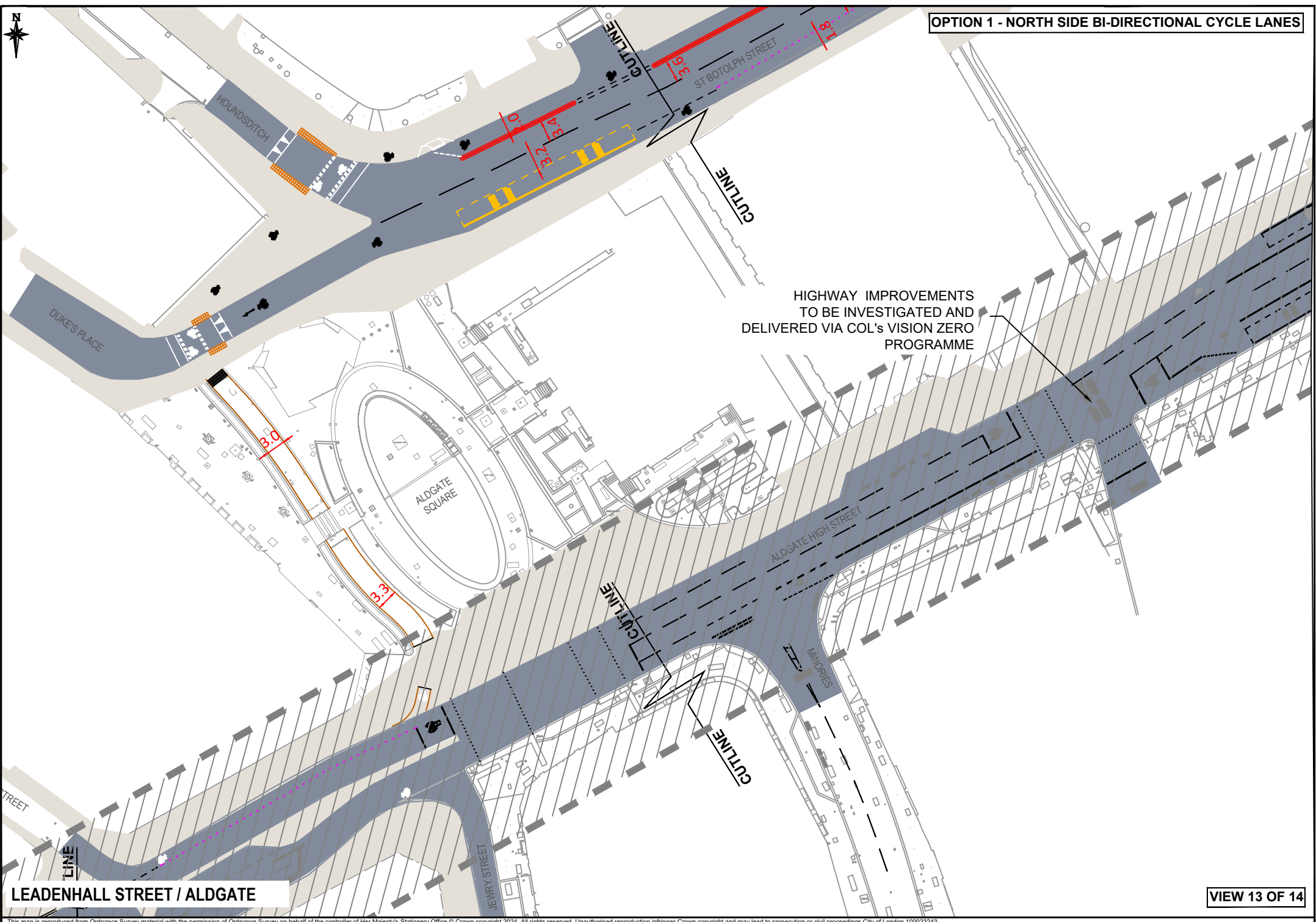
This map is reproduced from Ordnance Survey material with the permission of Ordnance Survey on behalf of the controller of Her Majesty's Stationery Office © Crown copyright 2024. All rights reserved. Unauthorised reproduction infringes Crown copyright and may lead to prosecution or civil proceedings. City of London 100023243











HIGHWAY IMPROVEMENTS
TO BE INVESTIGATED AND
DELIVERED VIA COL's VISION ZERO
PROGRAMME

This map is reproduced from Ordnance Survey material with the permission of Ordnance Survey on behalf of the controller of Her Majesty's Stationery Office © Crown copyright 2024. All rights reserved. Unauthorised reproduction infringes Crown copyright and may lead to prosecution or civil proceedings. City of London 100023243



OPTION 1 - NORTH SIDE BI-DIRECTIONAL CYCLE LANES

BUS SHELTER RELOCATED
ONTO BUS STOP ISLAND

PEDESTRIAN CROSSING
ON RAISED TABLE

JUNCTION LAYOUT AS PER
TFL's MANSELL STREET
CYCLEWAY SCHEME

HIGHWAY IMPROVEMENTS
TO BE INVESTIGATED AND
DELIVERED VIA COL'S VISION ZERO
PROGRAMME

BOTOLPH STREET / MIDDLESEX STREET

VIEW 14 OF 14

This map is reproduced from Ordnance Survey material with the permission of Ordnance Survey on behalf of the controller of Her Majesty's Stationery Office © Crown copyright 2024. All rights reserved. Unauthorised reproduction infringes Crown copyright and may lead to prosecution or civil proceedings. City of London 100023243.

